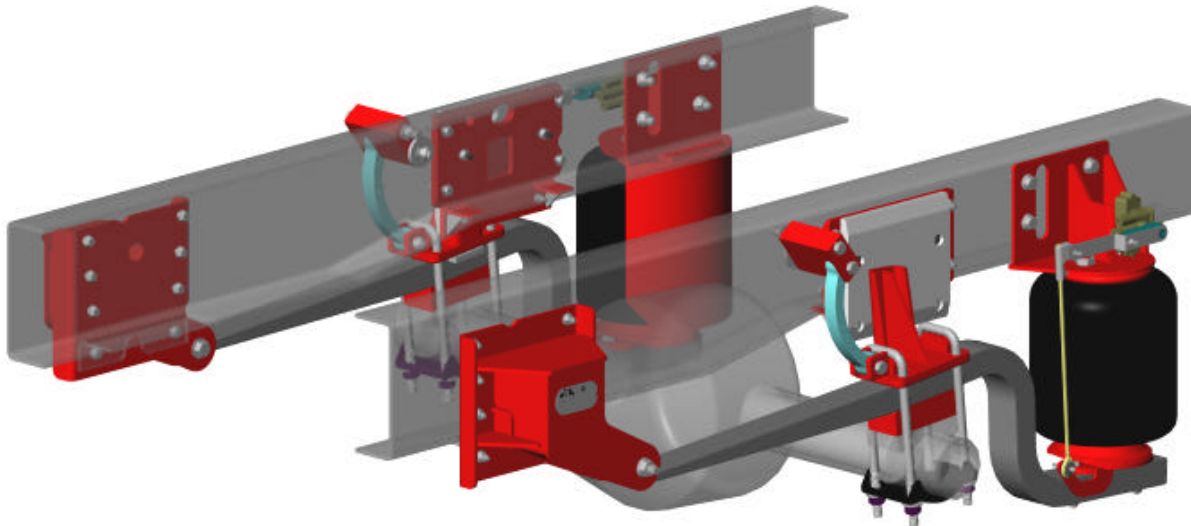


**R-SERIES**  
**AirGlide® RD855C**

*drive axle air ride suspension for  
2001 Chevrolet Silverado 3500 Cab Chassis and  
2001 GMC Sierra 3500 Cab Chassis*



**Suspension Capacity Rating**

8,550 lbs.

**Applications**

Ambulances  
Shuttle Buses  
Trailer Pull Vehicles  
Commercial Vehicles

**Features and Benefits**

- Improved ride over OEM leaf spring suspension.
- Load leveling, front-to-rear and side-to-side.
- Rear "dump" capability.
- Improved roll stiffness..



Brookston, IN USA  
Springfield, MO USA  
Mt. Vernon, MO USA  
Grimsby, ON CAN



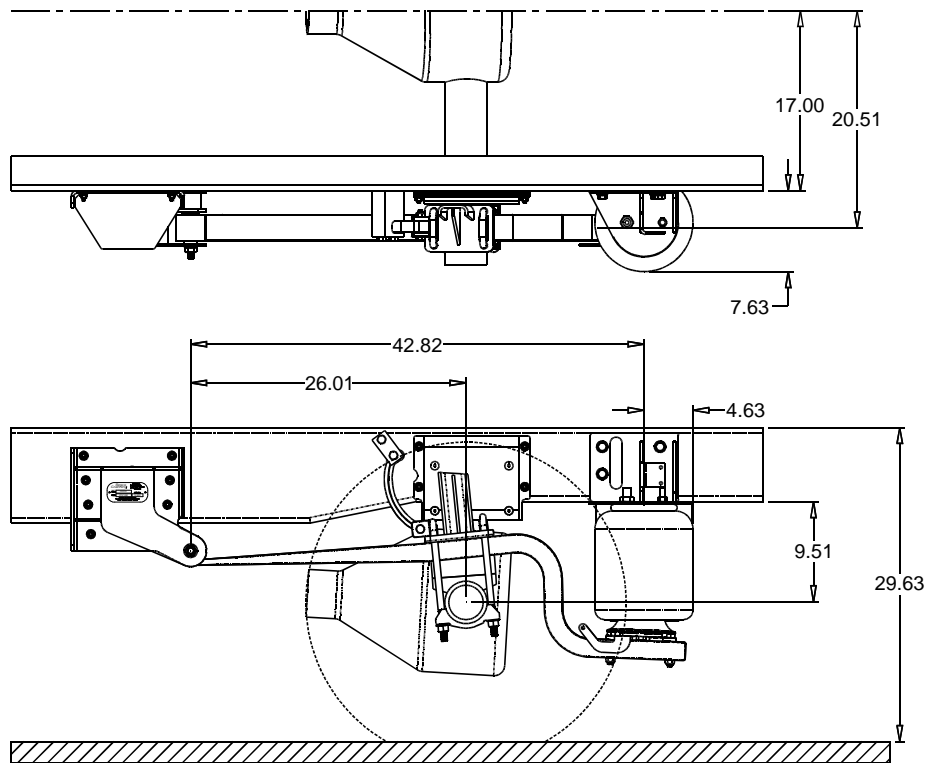
**1-800-255-7824**

[www.tuthill.com](http://www.tuthill.com)

## Specification Sheet

R-Series  
RD855C

<b>Ride Height:</b>	Design:	9.51"
	Jounce:	6.51" (3.00" Jounce Travel)
	Rebound:	12.51" (3.00" Rebound Travel)
<b>Suspension Capacity:</b>		8,550 lbs
<b>Frame Height:</b>		29.63" Ground to Top of Frame (Loaded Design, with Air Suspension) 26.63" Ground to Top of Frame (Deflated, Jounce Bumper Contact)
<b>Vehicle:</b>		2001 and later Chevrolet Silverado 3500 Cab Chassis and 2001 and later GMC Sierra 3500 Cab Chassis
<b>Tires:</b>		LT215/85R16D
<b>Air Control Kits:</b>		9930, Dual Height Control Valve with Electric Dump Valves 9932, Dual Height Control Valve (no Dump Valves)
<b>Options:</b>		8895, Auxiliary "Ping" Tank Kit 5703, Low Pressure Warning Kit, includes gauge and buzzer 5895, Gauge Kit 7101, Low Pressure Warning Kit, includes buzzer



[www.tuthill.com](http://www.tuthill.com)

Brookston, IN USA  
Springfield, MO USA  
Mt. Vernon, MO USA  
Grimsby, ON CAN

To place your next ReycoGranning® order or for more information on the specification or installation of a ReycoGranning® suspension, call the customer service number at 1-800-255-7824.

Tuthill Transport Technologies reserves the right to change this information without notice. Information contained herein is general in nature and not intended for specific application purposes.